

3D FROZEN
FIXED WEIGHT SLICER

NTD-300F

LIBRA300F



Slicing Capacity

MAX 5,000 pcs / hour

Applicable Temperature \bullet $-5 \sim -2^{\circ}\text{C}$

*Varies depending on the thickness, texture and shape of the meat

A high-speed fixed weight slicing system that allows a small number of people to process a large amount of material is now available!



Curl suppressor



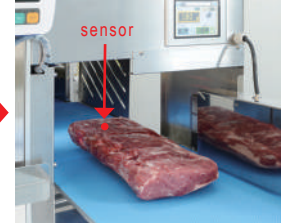
1 piece of fixed weight slicing



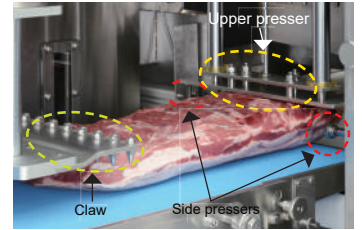
End loss ejection improves yield and work efficiency
*End loss ejection refers to the last irregularly shaped portion is ejected without slicing



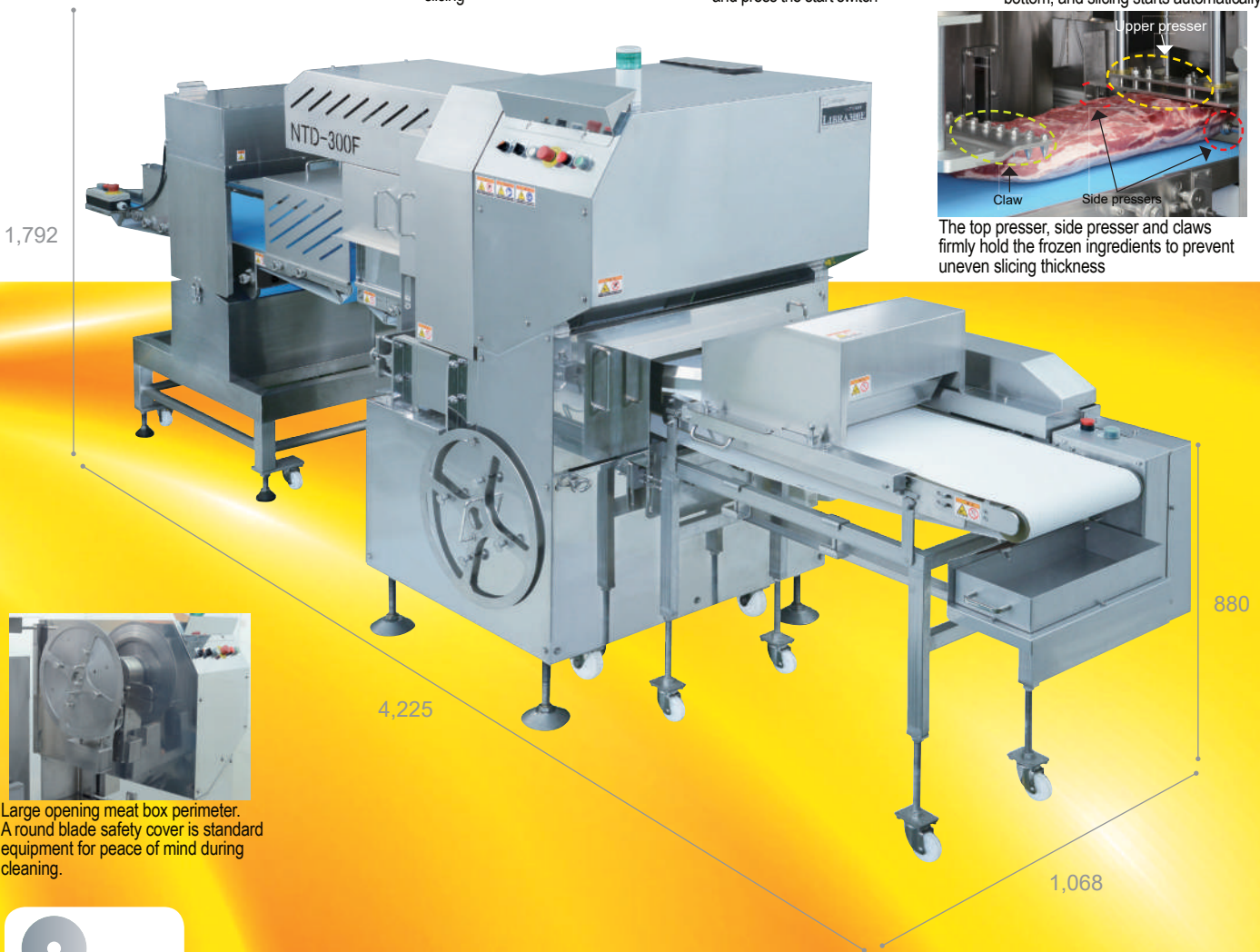
After weighing the ingredients, simply place them on the meat feeding belt and press the start switch



The shape of the material is read by two displacement sensors on the top and bottom, and slicing starts automatically



The top presser, side presser and claws firmly hold the frozen ingredients to prevent uneven slicing thickness



Large opening meat box perimeter. A round blade safety cover is standard equipment for peace of mind during cleaning.



$\phi 450\text{mm}$

- High speed fixed weight slicing
- Improve product value with non-contact measurement
- Improved safety level
- Holding mechanism to firmly hold down large frozen foods
- Equipped with curl suppression device
- Improved sanitation

Main Unit Specifications

Machine Dimensions	W1,068 x D1,824 x H1,792mm
Machine Weight	About 690kg
Motor Capacity	For round blade: 1.5kW For revolution: 1.5kW For feeder: 0.75kW (AC servo)
Power Consumption	0.83kW (50Hz/60Hz no load)
Slicing Performance	Fixed weight slice: Max 5,000 pcs/hr (when upper and side pressers are not used) Max 2,700 pcs/hr (when pressers are used) <small>*Assuming the slab of meat is 600mm long and 12mm thick</small>
Slice Thickness	(0) ~ 35mm
Sliceable Dimensions	W300 x H180 x L600mm
Air Supply	0.5Mpa 105L/min (tube outer diameter 8mm (50mL/min when cleaning))

3D Measuring Instrument Specifications

3D Unit Dimensions	W779 (belt 390mm) x D1,673 x H1,397mm
3D Unit Weight	About 225kg
Motor Capacity	Sensor direct drive: 0.03kW x 2 (AC servo) 3D unit conveyor: 0.09kW x 2 (brushless motor)
Conveyor Speed	0~13m/min

Conveyor Specifications

Conveyor Dimensions	W666 (belt 350mm) x D1,688 x H1,152mm
Conveyor Weight	About 105kg
Motor Capacity	0.09kW
Conveyor Speed	0~25m/min

