

3D FROZEN FIXED WEIGHT SLICER NTD-165F

LIBRA165F



- High speed fixed weight slicing
- Improve product value with non-contact measurement
- Chucking to hold frozen ingredients firmly
- Adopts a round blade for stable sharpness
- LCD touch panel for easy operation
- Max. speed of 250 pieces/min for fixed thickness slicing

Slicing Capacity **MAX 5,000** pcs/hr

Applicable Temperature $-5 \sim -2^{\circ}\text{C}$

*Varies depending on the thickness, texture and shape of the meat

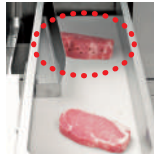
Fixed weight slicer with frozen food specifications is now available!



Chucking to hold frozen ingredients firmly



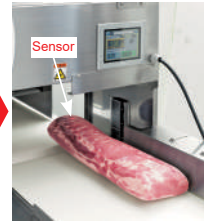
1 piece of fixed weight slicing



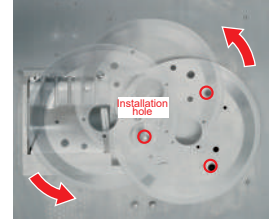
End loss ejection improves yield and work efficiency
*End loss ejection refers to the last irregularly shaped portion is ejected without slicing



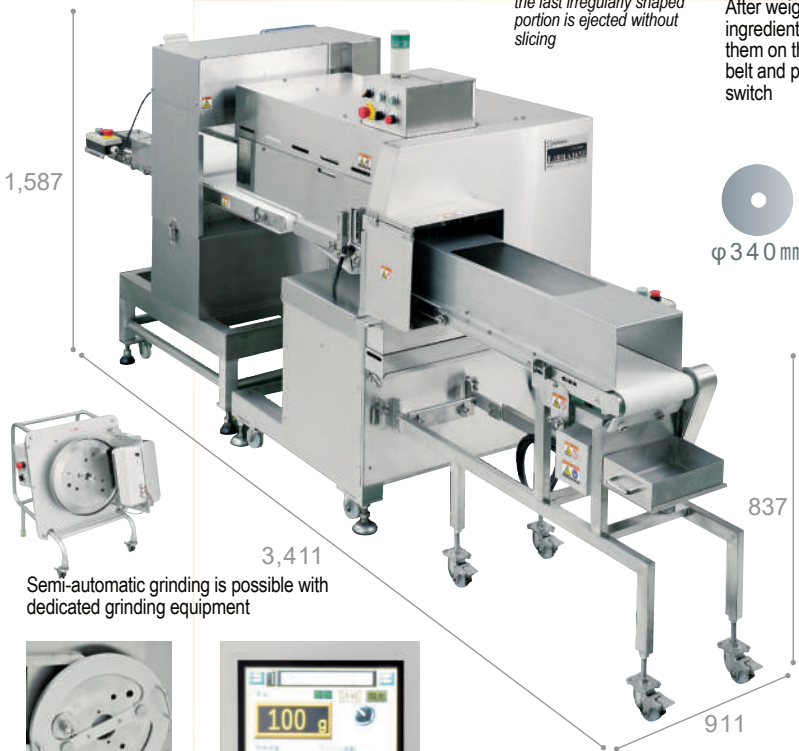
After weighing the ingredients, simply place them on the meat feeding belt and press the start switch



The shape of the material is read by two displacement sensors on the top and bottom, and slicing starts automatically



Round blade eccentric orbit
The round blade has three mounting holes, and by changing the mounting position, the blade can last three times more



$\phi 340\text{ mm}$



Semi-automatic grinding is possible with dedicated grinding equipment



Round blade detachable safety cover



LCD touch panel for easy operation

Main Unit Specifications

Machine Dimensions	W911 x D1,326 x H1,587mm
Machine Weight	About 306kg
Motor Capacity	For round blade: 0.4kW For feeder: 0.4kW x 2 (AC servo)
Power Consumption	0.56kW (50Hz/60Hz no load)
Slicing Performance	Fixed weight slice: Max 5,000 pcs/hr *assuming the slab of meat is 500mm long and 12mm thick Fixed thickness slice: Max 15,000 pcs/hr
Slice Thickness	(0) ~ 50mm
Sliceable Dimensions	W165 x H100 x L600mm
Air Supply	0.5Mpa 39L/min tube outer diameter 8mm

3D Measuring Instrument Specifications

3D Unit Dimensions	W779 (belt 390mm) x D1,542 x H1,397mm
3D Unit Weight	About 205kg
Motor Capacity	Sensor direct drive: 0.03kW x 2 (AC servo) 3D unit conveyor: 0.09kW x 2 (brushless motor)
Conveyor Speed	0~13m/min

Conveyor Specifications

Conveyor Dimensions	W373 (belt 220mm) x D1,209 x H1,002mm
Conveyor Weight	About 51kg
Motor Capacity	0.09kW
Conveyor Speed	0~22m/min



FIXED PACKAGE WEIGHT SLICER NPS-200PT

LIBRA

- Sliced products are automatically weighted and matched to the tray length! So anyone can make good-looking products in no time!
- Suitable for a wide range of product making (with fixed thickness slicing, pack fixed weight slicing and single piece fixed weight slicing functions)!
- Improved yield and work efficiency (with end loss ejection setting function)!
- Continuous slicing mode enables slicing of 300 pcs/min!

Slicing Capacity **MAX 500** packs/hr

Applicable Temperature $-2 \sim +3^{\circ}\text{C}$

*Varies depending on the thickness, texture and shape of the meat

Quick and clean weighing and packing for everyone!



World's first
PATENTED
Pack Fixed
Weight



$\phi 370\text{ mm}$



Air gun which is essential for cleaning is also standard equipment

Main Unit Specifications

Machine Dimensions	W1,210 x D1,841 (D3,100 w/conveyor) x H1,840mm
Machine Weight	565kg
Motor Capacity	For round blade: 0.75kW For revolution: 0.75kW For feeder: 0.4kW (AC servo)
Power Consumption	1.05kW (50Hz/60Hz no load)
Slicing Performance	Consecutive slice: 300 pcs/min Pack fixed weight: Max 500 packs/hr Single piece fixed weight slice: 15 pcs/min Two pieces fixed weight slice: 28 pcs/min
Slice Thickness	Regular (0) ~ 20mm / Pack fixed weight (0) ~ 10mm
Sliceable Dimensions	W300 x H150mm
Air Supply	0.5Mpa 65L/min tube outer diameter 8mm *exclude when air gun is used

1st Conveyor Specifications

Conveyor Dimensions	W615 (belt W420) x L660 x H847mm
Conveyor Weight	68kg
Motor Capacity	0.06kW
Conveyor Speed	0~20m/min

2nd Conveyor Specifications

Conveyor Dimensions	W675 (belt W420) x L1,630 x H892mm
Conveyor Weight	70kg
Motor Capacity	0.09kW
Conveyor Speed	0~20m/min

